

POP Settings

If you have a Post Office Protocol (POP) mail account, messages sent to you are stored on POP servers until you connect and retrieve them. When you connect to your POP e-mail account, the messages are downloaded to your computer. POP Mail may be used separately or with Exchange and/or Entourage.

Outlook 2010 Configuration With a POP Account

1. Go to **start/Control Panel** and click on **Mail**. Click on **show profiles** and **add** a new profile and name profile – First Name Last Name and click **ok**.
2. Select **Manually configure server settings...**

Add New Account

Auto Account Setup
Connect to other server types.

E-mail Account

Your Name:
Example: Ellen Adams

E-mail Address:
Example: ellen@contoso.com

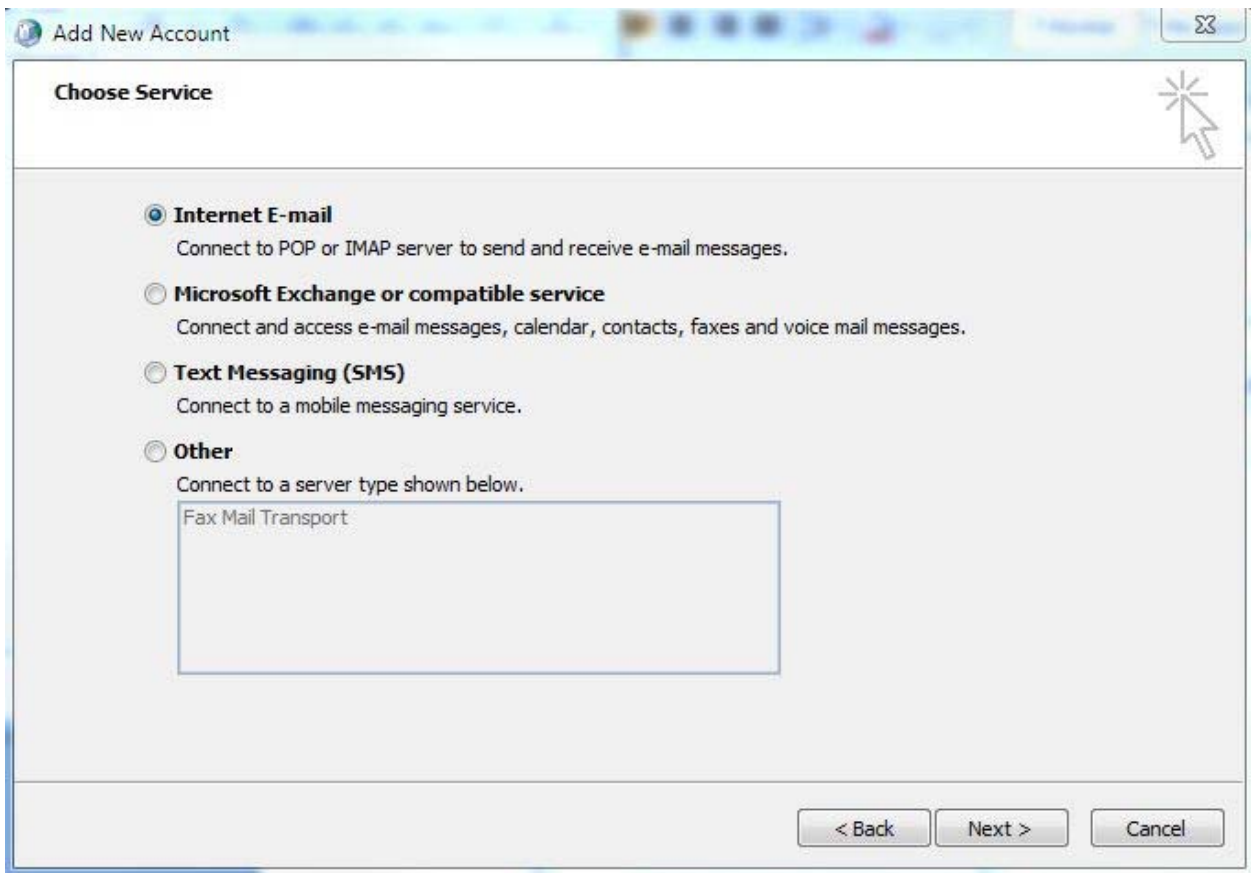
Password:
Retype Password:
Type the password your Internet service provider has given you.

Text Messaging (SMS)

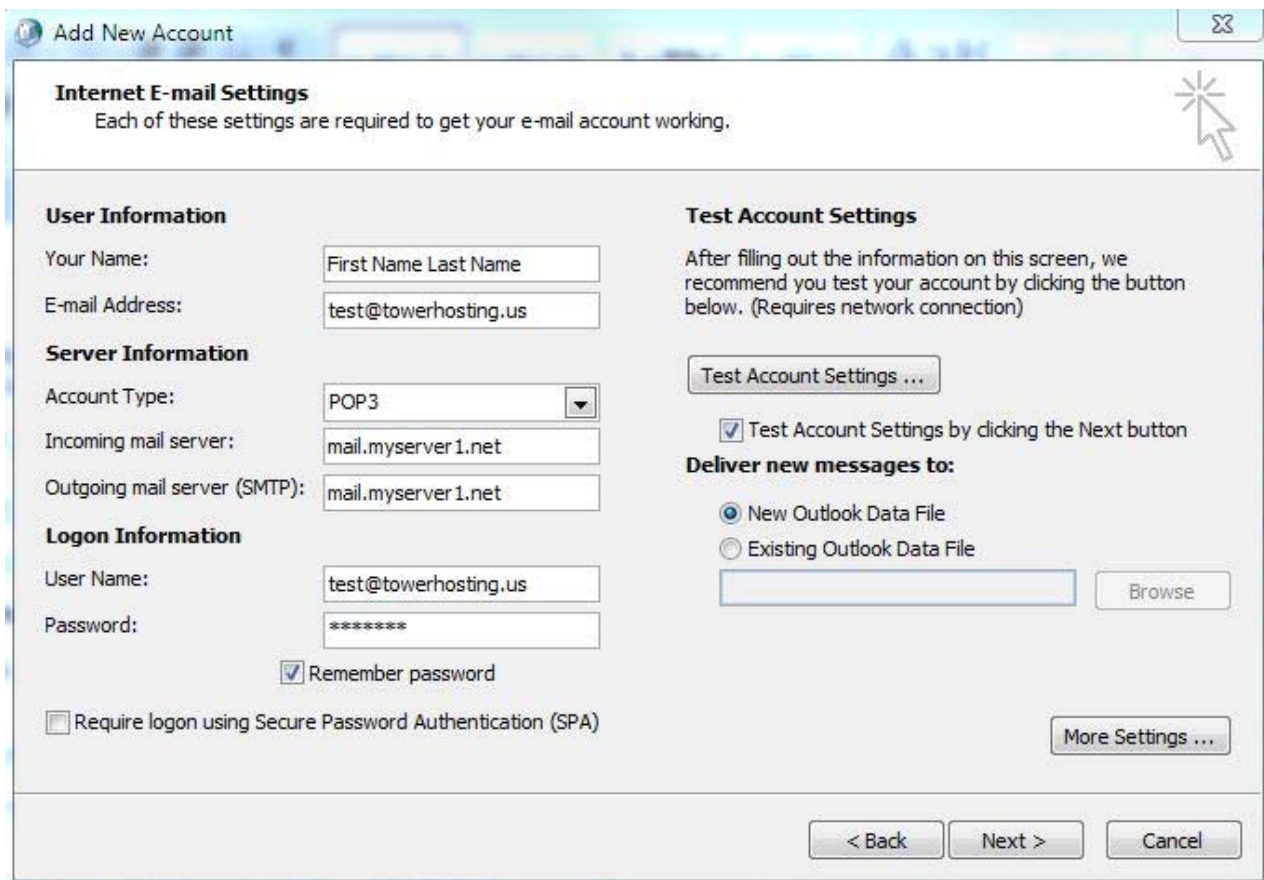
Manually configure server settings or additional server types

< Back Next > Cancel

3. From the [Add New E-mail Account pop-up window](#), select the **Internet Email** or the option that **has Pop**, and click **Next**.

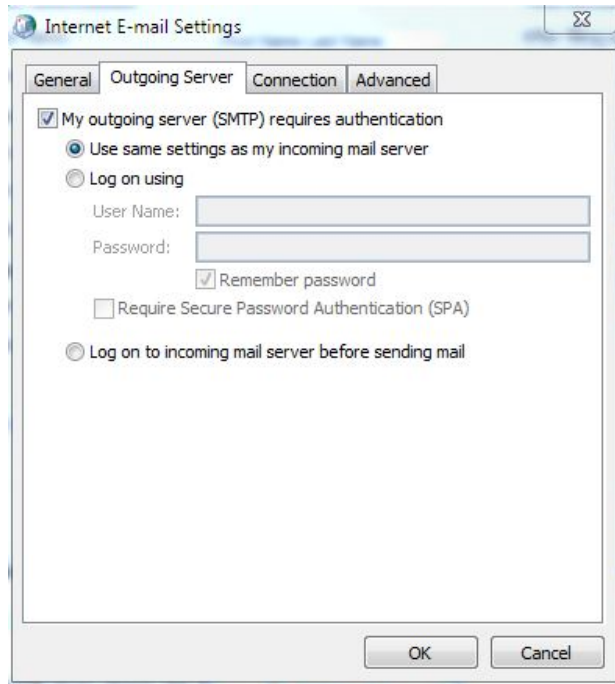


4. Enter email settings:

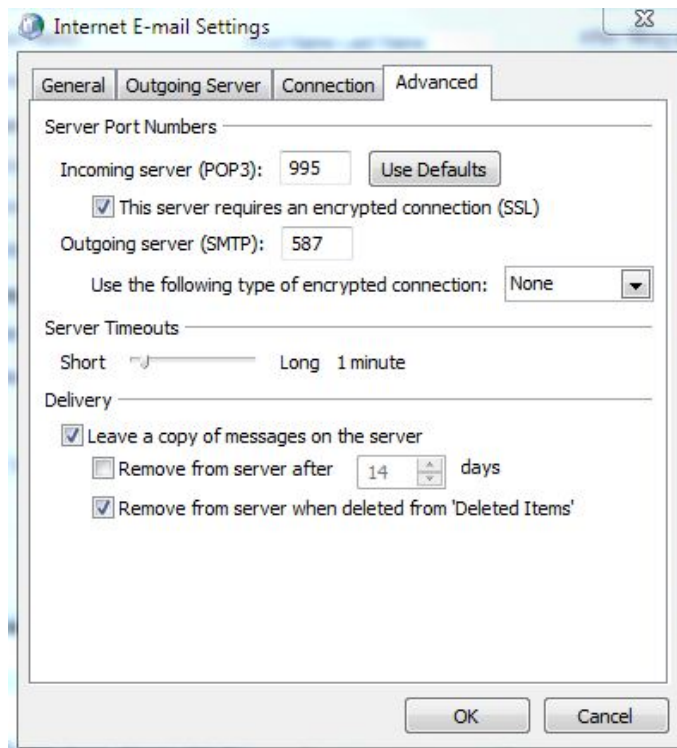


Email Settings:
Incoming Mail Server mail.myserver1.net
Outgoing Mail Server mail.myserver1.net
Username Your email address
Password Email password

5. Click on **ore Settings**, and under **Outgoing Server** tab, check the box: My outgoing server...



6. Under **Advanced** tab use these settings:



7. Click Ok and click next on the previous window and then finish

